



Public Health

NEW STUDENT GUIDE 2021



Welcome to the University of Arizona Mel and Enid Zuckerman College of Public Health!

We are thrilled that you have been admitted to the College, and we do hope you will choose us as your graduate school home.

The College is comprised of faculty and staff who are actively engaged in teaching, research, and service. The heart of the college, however, is our students. From all walks of life, it is our students who provide the energy and passion for a dynamic cohort of future public health professionals.

A great deal of information has been compiled in this New Student Guide to give you the tools you need to transition to graduate school, as well as to answer questions we frequently hear from students.

After you read this packet, if you still have questions, please feel free to contact our Director of Admissions at coph-admit@email.arizona.edu or 520.626.3201.

We look forward to meeting you soon!

Best wishes,

Chris Tisch, Assistant Dean for Student and Alumni Affairs
Gisela Ochoa, Administrative Assistant
Eva Batista-Wietecha, MEd, Director of Admissions
Kim Barnes, MPH, Director of Phoenix Student Affairs Office
Michael Tearne, MEd, MS/Doctoral and Certificate Programs Coordinator
Samantha Pierce, MPH, Online MPH Coordinator
Tanya Nemec, MPH, CHES, MPH Coordinator
Melanie Fleck, MPH, CHES, Coordinator of Undergraduate Programs
Abba Kris Maria Versace, CHES, Senior Academic Advisor- Undergraduates
Elsa Loya, Academic Advisor II - Undergraduates
Anais Garcia, MA, Academic Advisor II - Undergraduates
Mariah Albertie, Academic Advisor II - Undergraduates



Contents

About the College	4
Why MEZCOPH?	5
Advising & Mentoring	6
Arizona Residency	7
Books	8
Campus Health	8
Campus Recreation	9
Campus Safety	10
CatCards	10
Child Care	11
Computer Lab & Technology Resources	12
Counseling Services	13
Courses	15
D2L is where it's at!	18
Diversity and Inclusion	19
E-mail	19
Facebook	19
Financial Assistance	20
Health Insurance	23
Library Resources	25
Office of Student Services & Alumni Affairs	26
Orientations	29
College of Public Health Orientation	29
GPSC Graduate Orientation	30
International Student Orientation	31
Parking & Transportation	32
Student Organizations	33
Student Managed Events	35
Student Resources at Drachman	36
Student Resources at U of A	37
Talk with a Student	38
Tucson & Phoenix	38
Living in Tucson	38
Living in Phoneix	39
Housing in Tucson & Phoenix	39
Tucson Festivals	41
Tuition	43
Questions	43

About The University of Arizona Mel & Enid Zuckerman College of Public Health

The University of Arizona Mel and Enid Zuckerman College of Public Health (MEZCOPH) was established in January 2000 and accredited by the Council on Education for Public Health in 2003.

Under its administrative roof are academic programs that lead to five degrees:

Bachelor of Science (BS) with a major in public health

Master of Public Health (MPH) with concentration areas in Biostatistics, Environmental and Occupational Health, Epidemiology, Family and Child Health, Health Behavior Health Promotion, Health Services Administration, One Health, Public Health Policy and Management, and Public Health Practice

Master of Science (MS) degrees in Biostatistics, Environmental Health Sciences, and Epidemiology

Doctor of Philosophy (PhD) degrees in Biostatistics, Environmental Health Sciences, Epidemiology, and Health Behavior Health Promotion

Doctor of Public Health (DrPH) degree with concentration areas in Maternal and Child Health and Public Health Policy and Management

Our graduates have established careers locally, nationally, and internationally. Of note, they include the 17th United States Surgeon General, Dr. Richard Carmona, as well as a state public health veterinarian, an assistant commissioner of the Chicago Department of Health, a program manager for an intertribal council, a Fellow in the Centers for Disease Control, a research director for a violence prevention program, a health educator for a local AIDS program, and the mayor of Fortaleza, Brazil, to name just a few.

We are proud of the contribution we are making to build and maintain a competent public health workforce!

Mission Statement

MEZCOPH is dedicated to promoting the health and wellness of communities in the southwest and globally with an emphasis on achieving health equity through excellence in education, research & service.

Values Statement

MEZCOPH acts with respect and integrity to continuously advance health and well-being for all through knowledge, collaboration, empowerment, advocacy and sustainability. Our core values are: Fairness, Trust, Equity, Social Justice, Excellence, Innovation, Commitment, Collegiality, Diversity, Open Communication, Participation, Consensus and Enhancement. We strive to foster an educational community that values innovation and excellence in teaching, creation and dissemination of knowledge, practice-based research and research-based practice to address the health needs and interests of individuals and communities.



Why MEZCOPH?

Some highlights of the UA Zuckerman College of Public Health (MEZCOPH):

TRAINING STUDENTS FOR THE REAL WORLD with rigorous, discussion-based classes and strong faculty mentoring

WORLD CLASS RESEARCH by faculty who focus on populations living in the Southwest, along the US/Mexico border, and globally

CONNECTED WITH COMMUNITIES with expertise in health disparities and community-based participatory research, particularly among Latinx and American Indian communities

DIVERSITY The College consistently ranks among the top 5 of the accredited schools of public health for American Indian and Latinx students, and is home to a large cohort of Returned Peace Corps Volunteers

OUTSTANDING SERVICE LEARNING OPPORTUNITIES offer the chance to gain hands on experience in the application of public health principles in border health, rural health, urban health, sun safety, and more

ACTIVE STUDENT GROUPS including the Public Health Student Alliance, LUCHA, the Environmental and Occupational Health Student Association, Public Health Poster Forum Committee and the Social Justice Symposium Committee

STATE OF THE ART FACILITIES Drachman Hall features high-tech, comfortable classroom and meeting space

TUCSON and PHOENIX have 350 days of sun each year and outstanding opportunities for hiking, cycling, and other outdoor activities

Advising & Mentoring

All students are assigned a faculty mentor to work with during their time at the College of Public Health. The [Office of Student Services](#) also has student services professionals to assist you with your progression through your program. Below is the way we parse out these duties.

MPH Students

The College of Public Health utilizes a centralized model for advising MPH students. What this means is that you will receive advising regarding your plan of study, course sequencing of core and required courses, internship forms and process, and general programmatic policies and procedures from the student service professionals in the Office of Student Services and Alumni Affairs. Specifically, Tucson students work with [Tanya Nemec](#), MPH Coordinator, who can be reached at tjnemec7@email.arizona.edu or 520.626.3204. Phoenix students (Public Health Practice, Health Services Administration, and Phoenix MD/MPH students) work with [Kim Barnes](#), Director of Phoenix Student Affairs Office, who can be reached at kjf@arizona.edu or 602.827.2070.

After accepting your offer of admission, you will be assigned a Faculty Mentor. Your faculty mentor will help you conceptualize and plan your internship project, discuss elective coursework, and offer you career mentoring. This is the initial faculty mentor who will guide you through your first year or more in the program. As you progress through your degree, you may find another faculty member who is a better fit for your interests.

MS, PhD, and DrPH Students

Upon admission to the program, a Faculty Advisor is appointed for each incoming student. You may schedule a meeting with the Program Director at any time during your time in the program to discuss which faculty member would best suit your interests and needs.

Students benefit greatly from frequent communication with their faculty advisor. You will want to set up a meeting via phone or e-mail with your faculty advisor at some point before classes start or shortly thereafter.

During the first two semesters in the program, you are encouraged to acquaint yourself with faculty members and their research interests. By doing this, you will be able to select a faculty member appropriate for each stage of your graduate career. As a student advances and more precisely defines your direction, you may ask a different faculty member to serve as your Thesis or Dissertation Director.

In addition to your faculty advisor, [Michael Tearne](#) is our MS/Doctoral Programs Coordinator, and he can be reached at mtearne@email.arizona.edu or 520.626.2112. Michael will help you with program, college, and university policies and procedures.



Arizona Residency

Are you an Arizona state resident? If you're an Arizona state resident, or might become one soon, you should become familiar with the [Residency Classification Office](#)!

If you are incorrectly classified as an out-of-state student when you are an Arizona resident, you will need to follow the [UA Procedures for Establishing Arizona Residency](#). You will fill out the **Domicile Affidavit form** and return it to their office.

If your status changes during your time at the UA, you can apply for a review of your status during certain times of the year. Please contact the [Residency Classification Office](#) at 520.621.3636 or REG-rco@email.arizona.edu if you have any questions.

Books

So, you're registered and you're ready to go! You visit the big, beautiful [UA Bookstore](#) in the Student Union. You ask where the public health books are. They look at you like you just took a one-way trip from Pluto. "Hmmm," you think, "there must be more to this book-buying thing than meets the eye."

There is! Our books are sold at the [Arizona Health Sciences Center \(AHSC\) Bookstore](#). The AHSC Bookstore is located in Room 1116 on the ground floor of the [Arizona Health Sciences Center](#), near the [Arizona Health Sciences Library](#), just a bit north of the College of Public Health.

In addition, some books may be on reserve at the [Arizona Health Sciences Library](#). Many books can also be purchased or rented through [Amazon](#) or [Chegg.com](#). Required books may be listed on [UAccess Student Center](#) and/or [D2L](#), as well as on the syllabus on the first day of class.

Phoenix Students

If you're a Phoenix-based student, you may want to buy your books during a trip to Tucson, or you can buy/rent books online through vendors such as [Amazon](#) or [Chegg.com](#).



Campus Health

[UA Campus Health Service](#) promotes health, wellness, and safety at the University of Arizona by providing quality medical and mental health care and outstanding health education.

Services Offered

- [Animal Hazards Program](#)
- [Counseling and Psych Services \(CAPS\)](#)
- [General Medicine](#)
- [Health Promotion & Preventive Services \(HPPS\)](#)
- [Immunizations, Allergy & Travel Clinic](#)

- [Laboratory](#)
 - [Massage Therapy](#)
 - [Nutrition](#)
 - [Oasis Program Against Sexual Assault and Relationship Violence](#)
 - [Occupational Wellness](#)
 - [Orthopedics](#)
 - [Pharmacy](#)
 - [Physical Therapy](#)
 - [Psychiatric Medication](#)
 - [Sports Medicine](#)
 - [STI Testing](#)
 - [Walk-In Clinic](#)
 - [Women's Health](#)
 - [X-Ray](#)
-



Campus Recreation

Thinking about joining a fitness club? Look no further than [Campus Recreation](#)! Campus Rec offers a variety of programs, including:

[Classes like spinning, yoga, zumba, and boot camp](#)

[Personal training](#)

[Activity Classes](#)

[Outdoor Workout](#)

[Intramurals](#)

[Sports clubs](#)

[Aquatics](#)

The [Smart Moves Studio](#) is a designated area located next to RecSpa near the front desk for graduate students, faculty, and staff. Current hours are Monday-Friday 11 am-2 pm and 4-8 pm.

The [NorthRec](#) is a new Campus Rec site that is located closer to the College of Public Health.

UA students taking one or more units in the current semester are automatically Campus Recreation members, so take advantage of the opportunities!

Phoenix: Phoenix-based students do not have access to a university recreation facility. Phoenix-based students can request a waiver of the Campus Recreation fee each semester:

<http://rec.arizona.edu/student-fees>

Campus Safety

Safety is an important issue for the entire University of Arizona campus community. The University of Arizona offers various campus safety resources and services like [SafeRide](#) and [UA Alert](#).

The [UA Police Department](#) provides a secure atmosphere for the University Community. For non-emergencies, UAPD can be reached at 520.621.8273 (621-UAPD). In case of emergency, please still call 911.

For **Phoenix campus students**, Campus Security can be reached at 602.827.2368.

In addition, with the new **LiveSafe App**, you have the option to either call ASUA SafeRide or to use the app's feature called SafeWalk, which allows you to pick a contact from your address book to watch your location as you walk to your destination in order to make sure that you arrive safely. LiveSafe is free and accessible to all through the [Apple Store](#) or [Google Play Store](#).

CatCards

The [CatCard](#) is the official University of Arizona identification card. CatCards feature a digitized photo, digitized signature, SmartChip, and magnetic strip.

Prior to obtaining your CatCard, you must be enrolled in at least one class. To obtain your CatCard, visit the [CatCard Office](#), located on the first floor of the Student Union. Make sure to bring a government or state issued photograph identification such as a driver's license, state identification card, or passport, as well as your student ID number. There is a \$25 charge for your CatCard.

Phoenix: Phoenix-based students will have their CatCard photo taken during the Phoenix orientation, and then their CatCard will be given to them two to three weeks later. The CatCard also serves as the campus access badge for the facilities on the Phoenix Biomedical Campus.

Your CatCard can be used for:

- Library card
 - Campus Recreation Center access
 - Link with your Wells Fargo checking account
 - Accessing Arizona athletic events
 - Photocopying and printing services
 - Discounts at local businesses
 - And more!
-



Childcare & Family Resources

Curious about childcare options?
Explore solutions with us.

Child Care

UA Life Work Connections has resources for students searching for child care:
<https://lifework.arizona.edu/programs/childcare-choice>

In addition, UA offers a **child care subsidy** for students, depending on income:
<https://lifework.arizona.edu/programs/childcare-choice/student>

Lactation and family spaces are listed at: <https://lifework.arizona.edu/lactation-information/establishing-lactation-areas>

Computer Lab & Technology Resources

The MEZCOPH Computer Lab, equipped with 20 personal computers and a printer, is located on the third floor of Drachman Hall in Room A319. The Computer Lab is available for general use on Monday through Friday from 8 am to 5 pm, unless the lab has been scheduled for a class or other College activity.

Check out the computer lab schedule by dropping by the computer lab or looking under Drachman Hall, Room A319 for the day you're interested in at:

<https://resource-scheduler.pharmacy.arizona.edu/s/index>

Each system has Stata, SPSS, SAS, and MS Office installed on it. Three computers also have the ESRI GIS suite installed on them. The systems revert to their initial state after a reboot, so you will need a flash drive to save any work.

Printing is free! Students bring their own paper for printing.

The small student lounge in Drachman Hall, A102 is also equipped with a computer and printer for student use.

There are also computers available for student use in the [Arizona Health Sciences Library](#), which is available 24/7 to students with their CatCard.

Phoenix: Phoenix-based students have access to student computers and printing in Building 1. There is also an AHSC library branch on campus with student computer access.

Wireless Internet Access

Wireless access is available throughout and around Drachman Hall and the Phoenix Biomedical Campus via connection to the UAWiFi network. UAWiFi is a secure and fast wireless network that covers most of campus. Partially funded by the Student Technology Fee, it provides roaming wireless access for all students, staff and faculty on campus. Students log in to UAWifi using their NetID and password.

Technology Resources for Student

Free Microsoft Office 365 for Students! Student licenses covered under the Microsoft® Campus Agreement (MCA) enables UA students subscription to [Office 365 Education](#) (Microsoft software in the cloud) plan. This plan allows to install Office on up to 5 PCs or Macs and on other mobile devices, including Android, iPad®, and Windows tablets.

Software Licensing // A number of software options are available to students for free or discounted cost, including Adobe Creative Cloud, EndNote, and ESRI ArcGIS. [Download software here.](#)

24/7 IT Support // The [24/7 IT Support Center](#) technical consultants are available in person, by phone, or over chat to assist with campus applications and services or to help you with your personally owned computer or device. Support services are free for all students.

Services Available

- Supporting applications such as CatMail, UAConnect, D2L, UAccess, and NetID
- Troubleshooting problems on student, faculty, or staff computers
- Installing operating systems and software. Software licenses must be provided by the customer.
- Removing spyware and viruses
- Removing unwanted software
- Installing wired or wireless networking cards
- Troubleshooting network problems
- Taking reports of problems with the UA wired or wireless network

Request Services

In person: The 24/7 IT Support Center is located at Slonaker House, 1027 E. 2nd St. at Park Ave., but will be moving to the new Student Success District in the Main Library in 2020. Visit <https://it.arizona.edu/service/247-it-support> to confirm the location before you go.

Phone: (520) 626-TECH (8324) or (877) 522-7929.

Chat (Remote Desktop available): <http://support.arizona.edu> (see Documentation for assistance with using)

UAService (online form): <http://uaservice.arizona.edu> (see Documentation for assistance with using)

Counseling Services

Graduate school can be a stressful time for students, both academically and personally. Students at the University of Arizona are fortunate to have [Counseling and Psych Services \(CAPS\)](#), which offers psychological counseling and psychiatric services to students to help them cope with personal problems so that they can successfully achieve their educational goals. Licensed professionals provide brief treatment for anxiety, depression, difficulties with relationships, family problems, food/body image concerns, alcohol and drug concerns, ADHD, life crises, and other issues.

CAPS has two clinic locations offering triage, individual and group counseling, psychiatry, and care coordination services. [CAPS Main](#) is located on the third floor of Campus Health at Highland Commons (NW corner of Highland and 6th Street).

[CAPS North](#) is a new full-service facility located on the 2nd floor of NorthREC at the new UA North District (closest location to Drachman Hall).

Call 520.621.3334 for more information or for an appointment (walk-in hours are also available).

Phoenix: Phoenix students can utilize Tucson-based services as available and may also access services at ASU campuses.

Clinical Services

- [Counseling & Brief Therapy](#)
- [Oasis Program Against Sexual Assault and Relationship Violence](#)
- [Psychiatric Medication](#)
- [ADHD](#)

Other Services & Classes

- [Gender Spectrum](#)
- [Graduate Student Stress Management Workshop](#)
- [LGBTQIA Support Group](#)
- [Sexual Assault Survivors Support](#)
- [Tackle Test Anxiety](#)

Additionally, Arizona Health Sciences has a designated Mental Health Counselor, [Jenna Teso, LCSW](#). Jenna, is a Mental Health Counselor in the UArizona Health Sciences Office of Equity, Diversity & Inclusion. She provides confidential and free services including:

- Consultation for students and faculty and staff (for concerns about students)
- Assessment
- Referrals to campus and community resources
- Brief Individual Therapy
- Support Group Facilitation
- Trainings
- Workshops
- Class Presentations

For further information about these services or to schedule an appointment with Jenna, please visit this site: <https://diversity.uahs.arizona.edu/mental-health-wellness>.



Courses

Course Schedule

The College of Public Health course schedule is listed online at:

<http://www.publichealth.arizona.edu/students/course-schedule>

Course descriptions and prerequisites are listed at:

https://uaccess.schedule.arizona.edu/psp/pubsaprd/UA_CATALOG/HRMS/h/?tab=DEFAULT

College of Public Health courses are listed under the following prefixes:

BIOS | Biostatistics

EHS | Environmental Health Sciences

EPID | Epidemiology

HPS | Health Promotion Sciences (classes in Family and Child Health, Global Health, and Health Behavior Health Promotion)

PHPM | Public Health Policy and Management

PHP | Public Health Practice

Which Classes to Take?

MPH Students

For MPH students, we have outlined a Recommended Course Sequencing for full-time students, which is listed below the curriculum on each of the concentration pages. This course sequencing ensures that you take courses in the proper order, that your courses will not overlap, and that you will be able to complete the program in two years. If you will be a full-time student, **we strongly recommend that you follow the Recommended Course Sequencing.**

[Biostatistics](#)

[Environmental and Occupational Health](#) with tracks in Environmental Health and Industrial Hygiene

[Epidemiology](#)

[Family and Child Health](#) with tracks in Global Health and Maternal & Child Health

[Health Behavior Health Promotion](#)

[Health Services Administration \(Phoenix and Tucson\)](#)

[One Health](#)

[Public Health Policy and Management](#)

[Public Health Practice \(Phoenix-based program\)](#)

If you will be a part-time student or if you took classes prior to starting in the program as a non-degree student or a certificate student, you will want to talk with your advisor about your course schedule:

Tanya Nemec, MPH Coordinator

tjnemec7@email.arizona.edu | 520.626.3204

Kim Barnes, Director of Phoenix Student Affairs Office (for Public Health Practice, Health Services Administration, and Phoenix MD/MPH students)

kjf@arizona.edu | 602.827.2070

MS, PhD and DrPH Students

Students in the MS, PhD, and DrPH programs will talk with their faculty advisor regarding their course schedule. Please contact your faculty advisor by phone or e-mail to schedule an appointment to discuss your course schedule. Please view the required curriculum for your program via the following links:

[MS Biostatistics](#)

[PhD Biostatistics](#)

[MS Environmental Health Sciences](#)

[PhD Environmental Health Sciences](#)

[MS Epidemiology](#)

[PhD Epidemiology](#)

[MSPH/PhD Health Behavior Health Promotion](#)

[DrPH Maternal and Child Health](#)

[DrPH Public Health Policy and Management](#)

What are classes like?

Our classes provide a rich experience for those with a variety of learning styles. Core MPH courses are our largest courses (40-80 students), whereas concentration/program-level courses typically have 20-25 students, and some electives have 5-10 students.

The 5 core MPH courses (some of which are also required for our MS and doctoral programs) are offered either in the classroom in Tucson or online. These 5 core courses are offered at least once every fall and spring semester, although the modality (classroom vs. online) changes from semester to semester. Most other classes are offered in the classroom.

As you can imagine, teaching styles are based on the content of the course. For example, Biostatistics is largely a lecture course with homework and tests, whereas Sociocultural and Behavioral Aspects of Public Health includes more discussion and paper-writing. Public Health Policy and Management offers team-based learning with discussions, papers, and quizzes completed by the small group of students with whom you work.

You will find the classroom experience to be engaging and enlightening due to the expertise of our faculty, as well as the diversity of our student body, in terms of ethnicity, age, life experience, and geographic background. The age range of our current graduate student body is 22-67, with the average age of MPH students at 26 and the average age of doctoral students at 36. The College consistently ranks in the top 5 of the 49 accredited schools of public health for American Indian and Hispanic students, and is home to a large cohort of Returned Peace Corps Volunteers.

Phoenix: Phoenix-based students take the 5 core MPH courses online and the concentration-level courses are taken in person at our downtown Phoenix campus or online. Some in person classes are video-conferenced with Tucson, so there will be students in both Phoenix and Tucson.

Capstone

All students in the College complete a capstone project. MPH students complete a capstone course – 580 – Integrated Public Health Learning Experience – at the end of their time in the program, whereas MS students work on a thesis and doctoral (PhD and DrPH) students complete a dissertation.

As you progress through your academic program, you will work closely with your faculty mentor to determine opportunities for these projects. The Office of Student Services and Alumni Affairs also offers resources for you, and will help you through the paperwork and logistics of planning your project.

Registering for Classes

Steps to registering for classes

1. After you have been officially admitted to the University of Arizona, the UA Graduate College will send you your Student ID number by e-mail and your PIN by mail (your PIN can also be obtained in GradApp at <https://apply.grad.arizona.edu/users/login>).
2. You will need to log into UA GradApp to accept your admission (indicate your intent to matriculate): <https://apply.grad.arizona.edu/users/login>

3. Using your Student ID and PIN number, you will obtain your UA NetID, password, and e-mail address at: <https://netid.arizona.edu/>
4. Once you have established your e-mail address, you may begin checking your UA e-mail at: <http://catmail.arizona.edu> All official communications from the University of Arizona and the College of Public Health will be sent to your UA e-mail address.
5. At that point, you will be required to meet the [UA immunization requirements](#) prior to registering.
6. Before you start classes, remember to get your [CatCard](#), your student ID card!
7. Once you complete steps 2, 3, and 5, you will be able to log onto [UAccess Student Center](#) to register for your courses.
8. You will want to check out the [MEZCOPH Course Schedule](#), as well as the curriculum and Recommended Course Sequencing (MPH program only) at <http://www.publichealth.arizona.edu/academics/mph>.
9. [UAccess Student Center](#) is the center for obtaining information on your financial aid package, signing up for health insurance, paying tuition, etc.
10. If you are an Arizona resident, you will need to verify your residency through the Residency Classification Office: <http://www.registrar.arizona.edu/residency/aborpro.htm> You will also need to meet the Prop 300 requirements to verify your citizenship status: <https://www.registrar.arizona.edu/personal-information/proposition-300-faqs>
11. Updated tuition rates for all MEZCOPH graduate programs will be posted in June at the [Bursar's Office](#). Fall 2020 rates are listed under [Tuition](#).



[Desire 2 Learn \(D2L\)](#) is the campus-wide system used for both online and on campus classes. If you're taking a class that uses D2L, you will have access to the course one week before classes start.

Questions? Concerns? Check out the [D2L system requirements](#) and [D2L Help page](#).

Diversity and Inclusion



"The importance of creating a safe and inclusive environment for all students, faculty, and staff at the UA Zuckerman College of Public Health cannot be overstated. We are proud of the incredible diversity—diversity by its broadest definition—within our college, which greatly enriches our learning, working, and research environment." - Iman A. Hakim, MD, PhD, MPH, Dean of the College of Public Health

View our [Diversity and Inclusion page](#) to learn more about our current student's experiences, and find links to many useful resources on campus.

E-mail

After you have been officially admitted to the University of Arizona, the UA Graduate College will send you your Student ID number by e-mail and your PIN by mail. Using your Student ID and PIN number, you will obtain your UA NetID, password, and e-mail address at <https://netid.arizona.edu/>.

Once you have established your e-mail address, you may begin checking your UA e-mail at <http://catmail.arizona.edu>.

All official communications from the University of Arizona and the College of Public Health will be sent to your UA e-mail address once you begin classes.

Facebook

A Facebook group has been created for new students to connect around issues such as events, housing, moving to Tucson or Phoenix, connecting this summer, and other issues you'd like to discuss. A few current students will also be members of the group to help answer questions you might have about student life. We welcome you to join the group!

2021 University of Arizona College of Public Health – New Graduate Students
<https://www.facebook.com/groups/mezcophgradstudents2021>

This group is for all admitted graduate students (master's and doctoral) in the College of Public Health. This is a "closed" group, which means that others will be able to see the group and who is in it, but only members will be able to see posts.

You will need to request to join the group, and of course, you can leave the group at any time. Happy Facebooking!

Financial Assistance

In order to be considered for financial assistance, admitted students must complete a financial aid application (linked below) and a FAFSA (for US citizens and permanent residents only).

College of Public Health Scholarship and Teaching Assistantship Application

Financial assistance is awarded on the basis of both need and merit. Priority for funding from the College of Public Health is given to doctoral students, then master's level students, and then undergraduate students. Additionally, full-time students are given priority for financial assistance, as are students who applied by the priority application deadline.

Students who applied by the priority deadline will be notified by the beginning of April if you are receiving an initial offer of financial assistance from the College of Public Health. If these award offers are declined, the funds will be re-awarded to the next student on the funding priority list.

Ms. Chris Tisch, Assistant Dean for Student and Alumni Affairs, handles college level funding. If you have questions regarding funding, please contact Chris at cbt@email.arizona.edu or 520.626.9112. You may also wish to schedule an in person or phone appointment with Chris by contacting her assistant, Gisela Ochoa, at ochoag@email.arizona.edu or 520.626.3200.

Loans are handled by the UA Office of Student Scholarships and Financial Aid (more information below). Students are typically offered a loan package in June.

Roles Related to Financial Processes and Information

There are a number of individuals and offices within the University whose jobs relate to your financial bottom line. They include:

- The UA Bursar's Office which provides student account and billing information; receives payments for tuition, fees and miscellaneous campus charges; provides collection of delinquent accounts; delivers refunds and financial aid residuals after disbursement.
- The UA Office of Student Scholarships and Financial Aid is the institutional office that distributes federal loans, grants and miscellaneous scholarships. Information from your FAFSA is processed by this office. The UA Financial Aid Office has informed us that the maximum federal loan per year for MPH and DrPH students is \$33,000 and the lifetime maximum is \$224,000. The maximum federal loan per year for MS and PhD students is \$20,500, with a lifetime maximum of \$138,000. Students can obtain additional, credit-based loans called GradPlus Loans. There is a listing of [scholarships on their website](#). If you have specific

questions for the Office of Student Scholarships and Financial Aid, you are encouraged to e-mail askaid@email.arizona.edu to get your concerns addressed.

- **Mel and Enid Zuckerman College of Public Health Office of Student Services** - In addition to managing the support activities related to applicants, students and alumni, we handle the application and disbursement processes for our limited College scholarships, Graduate College Scholarships and our teaching assistantships. A College Scholarship Committee oversees the scholarship award process. Our Student Services Office does not assess charges to your tuition bill, take payments, or have any access to the Bursar's Office process. We also do not play any part in releasing loans to you. The Scholarship and Teaching Assistantship Application is related to funding that is connected to the College of Public Health only.

Initial Recruitment Awards

A certain percentage of our funding is reserved for the top applicants to each program. These students will be notified of a financial award shortly after their offer of admission. If these awards are declined by these applicants, the funds will be re-awarded to the next student on the funding priority list.

General Scholarships, Graduate Tuition Scholarships, and Teaching Assistantships

Awards of general scholarships, graduate tuition scholarships, and teaching assistantships are based on need, merit, and experience (in the case of teaching assistantships). Priority for these types of awards is given to doctoral students, then master's level students, and then undergraduate students.

Named Scholarships

There are several named scholarships within the college. These scholarships are reserved for continuing students. Students may apply for them following their first semester in their degree program.

Teaching and Research Assistantships

Graduate students in the College of Public Health are eligible to apply for teaching and research assistantships across campus. Most teaching assistantships are 10 hour per week appointments. Research assistantships are either 10 or 20 hours per week. The benefits are as follows:

- A small stipend - approximately \$3,700 per semester for a 10 hour/week appointment or \$7,400 per semester for a 20 hour/week appointment
- A waiver of out-of-state tuition
- A percentage off of base in-state tuition (50% off of base in-state tuition for a 10 hour/week appointment or 100% off of base in-state tuition for a 20 hours/week appointment).
- Please note that mandatory university fees and public health differential tuition are the responsibility of the student (approximately \$1,500 per semester).
- Campus healthcare benefits are included
- 10% discount at the University of Arizona bookstore

Note: The benefits of assistantships vary for Public Health Practice and Health Services Administration students.

Peace Corps Fellows

The University of Arizona [Peace Corps Fellows](http://grad.arizona.edu/peacecorp/) program is a great opportunity for Returned Peace Corps Volunteers. The University of Arizona has a thriving Peace Corps community, and the College of Public Health is proud to have a large cohort of RPCVs. The application process for this fellowship is outlined at <http://grad.arizona.edu/peacecorp/>

Western Regional Graduate Program

The College of Public Health participates in the [Western Regional Graduate Program \(WRGP\)](#), which makes high-quality, distinctive graduate programs and healthcare-related programs available to students of the West at the resident tuition rate. If you are a resident of Alaska, Arizona, California, Colorado, Hawaii, Idaho, Montana, Nevada, New Mexico, North Dakota, Oregon, South Dakota, Utah, Washington, or Wyoming, you may be eligible to enroll in our MPH, MS, PhD, and DrPH programs at Arizona resident tuition rates. You may need to provide proof that you are a resident of one of these states, typically in the form of a state-issued ID.

In order to apply for the WRGP program, please complete the [College of Public Health Named Scholarship Application](#) & [Teaching Assistantship Application](#).

Handshake

Some student positions (both student worker and graduate assistantships) are listed at [Handshake](#). Employment in student positions (non-assistantships) does not provide benefits, but does provide a salary.

International Students

If admitted to a graduate program within the College of Public Health, International Students will need to complete the [Financial Guarantee](#) and submit it to the UA Graduate College so that they may process your visa. Financial need of international students is generally much greater than our available resources are able to provide. For this reason, we are unable to provide full financial guarantees. You will be considered for the same level of aid as domestic students.

Other Sources of Support

Since it's not possible for the College of Public Health to provide scholarships to all of our students, you are encouraged to consider and search out other avenues of funding your education. First, remember that graduate assistantships exist all over campus and provide the same monetary benefits to students no matter where they are employed. Faculty members are your best source of information about research assistantships.

Contact Faculty

In the College of Public Health, if you look in the [Directory on our website](#), you can determine what research interests particular faculty members have. If they match yours, send the faculty member an e-mail expressing your interest in their research and inquire whether they have research assistantships or can refer you to others who might have these opportunities. We recommend e-mailing faculty members with your resume and a short summary of your background and interests. Other departments and colleges have similar directories, etc.

If we have been informed of these opportunities, the Office of Student Services and Alumni Affairs sends this information to incoming and current students via e-mail or posts on the Facebook group.

Human Resources

Periodically check the [UA Careers](#) site of the University for part-time and full-time staff positions. If you are employed in a half-time or greater classified staff position, you would receive benefits, including a [significant tuition break](#).

Community Organizations

Finally, agencies around town often hire part time help and this is a great way to get some public health experience under your belt. Many organizations list their positions on [Indeed.com](#).

UA GradFunding Newsletter

Subscribe to the GradFunding Newsletter, a service of the University of Arizona Graduate College, Office of Fellowships and Community Engagement. To subscribe or unsubscribe to the newsletter, send an email to list@list.arizona.edu with "subscribe (or unsubscribe) gradfunding FirstName LastName" in the subject line.

Scholarship Universe

Check out the [UA Scholarship Universe](#), which is where we list scholarships from our donors and partners. "We search, you apply! We've brought searching for scholarships into the 21st century so that University of Arizona students are matched to scholarships that they are eligible for. No bogus results. No wasted time. "

ASPPH Financing Your Degree

You will find tips, tricks, search engines, and links to specific scholarships through the [ASPPH Financing Your Degree link](#)!

Scholly

Learn about many scholarship opportunities through [Scholly](#).


Health Insurance

As we all know in public health, health insurance is very important. If you don't have any other health insurance, it is highly recommended (and required for international students) that you purchase [student health insurance](#) through the U of A on [UAccess](#).

Student Health Insurance

The University of Arizona offers one [major medical health insurance policy](#) designed specifically for eligible University of Arizona students and their dependents. This policy provides coverage nationwide and has an emergency benefit worldwide. All three State of Arizona university health centers serve as primary care providers for the enrolled student.

International Students: The University of Arizona requires that all international students on non-immigrant visas, regardless of classification or number of units, carry the Student Health Insurance unless you qualify for an exemption. Exemptions must be requested each semester.



STUDENT HEALTH INSURANCE PLAN

Excellent Coverage

A Top Tier Plan Designed for Students

In-Network	2020-21
Policy Year Maximum	Unlimited
Out-of-Pocket Maximum	\$1500
Medical Deductible	\$250
Coinurance	Covers 80% <small>(after medical deductible)</small>
PCP/Specialist/Urgent Care	\$25 copay
Emergency Room	\$200 copay
Pharmacy Deductible	\$125 <small>(waived at CHS Pharmacy)</small>
Pharmacy Co-pays:	
• Generic	\$15
• Brand Preferred	\$40
• Brand Non-Preferred	\$80
• Specialty Drugs	\$80
Generic Contraceptives, Lab and X-rays	Covered 100%
Annual Premium	\$2725

Additional benefits to this plan

- 12 month coverage for eligible students
- Nationwide coverage
- On Campus Insurance liaisons
- Annual routine vision exam benefit
- International travel benefits

CAMPUS HEALTH

your home for healthcare on campus

underwritten by

Aetna

Plan details at: [HEALTH.ARIZONA.EDU](https://health.arizona.edu) (click on Fees & Insurance)

CampusCare Supplement

[CampusCare Supplement](#) is a prepaid health care option limited to services provided within the Campus Health Service. It serves as an ideal supplement for students covered by private health insurance, where you may have a high deductible, limited benefits or no coverage for charges incurred at the health center. This option also serves well for students who do not have health insurance. After a designated office visit co-payment, all laboratory tests, x-rays, medical procedures and supplies are covered providing the diagnostic work-up is initiated at the Campus Health Service.

Graduate Assistant/Associate Health Insurance Benefit

The University of Arizona will [pay the premium](#) for individual coverage as part of your benefits for being a Graduate Assistant/Associate, but you must register for these benefits on [UAccess](#).

Dental Discount Program

The Vital Savings on [Dental Discount Program](#) offered through Aetna and endorsed by the Arizona Board of Regents is available to all registered University of Arizona students.

Library Resources

For writing papers, doing biostats homework, checking e-mail, or a bit of chatting with classmates, the [Arizona Health Sciences Library \(AHSL\)](#) is the place to be! The library is open Monday through Friday from 7 am to 7 pm and Saturday and Sunday from 9 am to 7 pm. After the doors lock, UA Health Sciences students, faculty, and staff can enter the library with their CatCards. [More information](#) about hours. The library offers great access to journals, information services, grant support, wireless internet access, and [computer labs](#). [Map of location in Tucson](#)

Phoenix Health Sciences Library hours, map, and parking information:
<http://phoenixmed.arizona.edu/library>

In addition, we have our own Health Sciences librarian! During the academic year, AHSL librarians are available in room A202 of Drachman Hall to provide individual assistance to students, faculty, and staff. If you would like to set up an appointment, please contact Jean McClelland at jmcc@email.arizona.edu or 520-626-7508.

You may also, from time to time, visit (electronically or in person) the [UA Library](#) on main campus (see [map](#)).

Office of Student Services & Alumni Affairs

The staff of the Office of Student Services and Alumni Affairs is well prepared and ready to assist you in your quest for a public health degree. In 2012, our team was honored with the University of Arizona Team of Excellence Award.

Our office provides centralized comprehensive student services for all applicants, students, and alumni of the UA Zuckerman College of Public Health, including preadmission counseling, guidance related to degree requirement deadlines, graduate internship implementation, career planning advisement, and college-provided financial aid and scholarships.

Most importantly, the Office of Student Services and Alumni Affairs exists to help students pursue their dreams of becoming public health professionals. We look forward to working with you!

See a full list of our student services professionals, as well as their contact information and smiling faces, below:



Chris Tisch

Assistant Dean

Directs the activities and staff of OSSAA. Counsels students and serves as their advocate. Administers student scholarship and teaching assistantships award process. Provides career advisement services. Acts as the advisor to student and alumni groups. Represents MEZCOPH student interests at the college, university, local and national levels.

cbt@email.arizona.edu

520.626.9112



Gisela Ochoa

Administrative Assistant

Plans and facilitates academic events. Manages the Assistant Dean's calendar. Manages locker assignments. Facilitates student travel arrangements. Tracks alumni and maintains the alumni database.

ochoag@email.arizona.edu

520.626.3200



Eva Batista-Wietecha

Director of Admissions

Counsels prospective graduate students, applicants, and admitted students. Directs the College's recruitment strategies. Manages the graduate student admissions process. Serves as the advisor for the Graduate Student Ambassadors.

coph-admit@email.arizona.edu

520.626.3201



Michael Tearne

MS/Doctoral and Certificate Programs Coordinator

Advises MS, PhD, and DrPH students regarding MEZCOPH and Graduate College policies, procedures, and deadlines. Provides admission and advising services to those interested in and enrolled in MEZCOPH certificate programs.

mtearne@email.arizona.edu

520.626.2112



Tanya Nemec

MPH Coordinator

Advises MPH students regarding course sequencing, Graduate College processes, forms, and deadlines. Assists with course registration and internship processes. Advises MPH Internship Conference Committee.

tjnemec7@email.arizona.edu

520.626.3204



Kim Barnes

Director of Phoenix Student Affairs Office

Coordinates and supports the administrative, student, faculty, and academic activities of the MPH program in Phoenix. Assists Phoenix students regarding course sequencing, Graduate College processes, forms and deadlines. Manages admissions for Phoenix students.

kjf@arizona.edu

602.827.2070



Abba Kris Maria Versace

Senior Academic Advisor - Undergraduates

Serves as the academic advisor for undergraduate students in the fully online public health program.

abba@email.arizona.edu

520.626.3205



Melanie Fleck

Coordinator – Undergraduate Programs

Serves as the academic advisor for undergraduate students with last names N-Z, and performs recruiting/outreach functions. Supervises the Undergraduate Student Ambassadors.

mfleck@email.arizona.edu

520.626.3205



Mariah Alberty

Academic Advisor – Undergraduates

Serves as the academic advisor for undergraduate students with last names A-G, and performs recruiting/outreach functions.

malberty@email.arizona.edu

520.626.3200



Elsa Loya

Academic Advisor – Undergraduates

Serves as the academic advisor for undergraduate students with last names H-O, and performs recruiting/outreach functions.

eloya1@email.arizona.edu

520.626.3200



Anais Garcia

Academic Advisor – Undergraduates

Serves as the academic advisor for undergraduate students with last names P-Z, and performs recruiting/outreach functions.

agarcia3@email.arizona.edu

520.626.3207



Orientations

College of Public Health Orientations

In an effort to prepare students for a successful graduate experience, the college has developed a two part orientation experience: Online Orientation and In Person Orientation. Participation in both parts of the New Student Orientation is required.

Information communicated at orientation is vital to your success in the program. Orientation is also your opportunity to meet fellow students, faculty, and staff who will help shape your experience over the next few years. Further information about our mandatory student orientations:

Online Orientation

Online Orientation includes viewing video presentations, completion of a Public Health Essentials in Action Course, and a follow-up webinar. This orientation will be available for students during the first week of August, and instructions will be e-mailed to you. This portion of orientation is mandatory.

MPH

Mandatory new student orientation for MPH students will be held on Friday, August 20. Please plan to be in Tucson for this event. Public Health Practice, Health Services Administration-Phoenix, and MD/MPH Phoenix students will participate in this mandatory orientation at the Phoenix Biomedical Campus. More information regarding time, location, and how to RSVP will be communicated in early summer.

PhD, DrPH & MS

A 2 day mandatory new student orientation for PhD, DrPH, and MS students has been scheduled for Thursday, August 19 and Friday, August 20 in Tucson. More information regarding time, location, and how to RSVP will be communicated in early summer.

GPSC Graduate Orientation

In addition to the College of Public Health New Student Orientation, the [Graduate and Professional Student Council \(GPSC\)](#) offers a [Graduate Orientation](#) (2021 dates to be announced) for all new graduate students. This is a great opportunity for you, but is not required.

Learn about available UA resources, get tips on surviving graduate school, and meet your new peers. Free lunch, prize drawings, and a vendor fair featuring local businesses will wrap up the day. And of course, don't forget to pick up your free T-shirt!

Information sessions on a variety of topics to help you make the transition to graduate school will be held throughout the morning. Topics include:

- Financial Aid
- External Funding Resources
- Coping with Stress
- Campus Health Services and Student Health Insurance
- Time Management Tips
- Career Services for Graduate Students

2021 Date To Be Announced. More information will be forthcoming!



International Student Orientation

International Student Programs and Services (ISPS) holds the Online International Student Orientation and Check-In for new international students. This is **mandatory** for all new international graduate students. Registration for classes will not be permitted until this has been completed.

Students will also have the option to complete these items during the Graduate and Professional Student Council (GPSC) orientation.

Registration, airport transportation, housing, and more information:
<https://global.arizona.edu/international-students/graduates>

Also, ISPS has a great resource manual for international students:
<https://global.arizona.edu/international-students/new-student-resources>

Parking & Transportation

Since some students live two blocks from campus and others live two hundred miles away, you might be wondering about parking and transportation in and around the U of A, both in Tucson and in Phoenix.

Tucson

The [UA Parking and Transportation Services](#) offers a number of parking options, including parking lots, garages, park & ride programs, and [carpool options](#). Make sure to put your name in the hat early for parking programs, as there is often a waiting list!

[Specific information on permits](#)

[Parking map](#)

If you would like to get a permit, they're typically valid August through the following August. The cost for most permits is in the range of \$459 (Zone 1) to \$610 (street specific and lot specific) to \$726 (garage).

Our recommendations close to Drachman Hall would be:

- Zone 1 (which gives you access to any Zone 1 lot on campus)
- Lot Specific 2029 or 2012
- Lot Specific 9003, which is across Campbell
- Street Specific on Helen, Martin, Mabel, or Warren
- Highland Garage
- Health Sciences Garage

Parking alternatives in Tucson

[CatTran](#) is a free shuttle service that is available on and near campus. In addition, [Sun Tran](#) is the Tucson bus system, which covers most of the city of Tucson and has many stops near campus. A reduced fee [Sun Tran U-Pass](#) is available for all UA students.

Introduced in 2014, Tucson's [Sun Link Modern Street Car](#) conveniently connects the UA campus with downtown venues.

Since Tucson is known as one of the top 5 cycling towns in the US, many of our students ride their bikes to class. Check out the [Tucson bike map](#)! Tucson also offers [TuGo Bike Share](#)!

In addition, we recommend that you check out the University's bike information page. There is info there about how to [register](#) your bike or even use the free bike [share](#) program, called [Cat Wheels](#)!

Bike Valet

Additionally, there is a free bike valet service, open Monday through Friday from 7:45 AM – 6 PM, located on the north side of Helen Street just east of the Warren bike path and southwest of Drachman Hall. Check-in your bike with one of our friendly Bike Valet attendants who will give you a key tag. Your

bicycle will be watched and monitored while it is parked. When you return to the valet station, hand the attendant the key tag to receive your bike. For more information, please visit the Bicycle Programs website. Make sure to register your bike through Bicycle Services at UA Parking and Transportation: <https://parking.arizona.edu/bicycle/>

Phoenix

There are many choices for traveling to and from the Phoenix Biomedical Campus. Visit the following link for details on the many options: <https://parking.arizona.edu/parking/biomedical-campus/index.php?referral=compurchase>. The two most popular options are the Light Rail or driving/carpooling.

The [METRO Light Rail](#) has two stops that are approximately a ten minute walk from campus. This is an excellent choice for students who like to use their commute time to catch up on schoolwork! To purchase a reduced rate student pass, please visit the Parking & Transportation Services website and complete the Student Bus Pass Application.

If you prefer to drive to campus, you have several choices:

1. You can purchase a parking permit for the academic year.
2. You can attempt to find free parking on the street behind our building or in the local neighborhoods (this is pretty hard to come by).
3. You can pay the meter to park in the [10002 Visitor Lot by Building 4](#) for just the hours you plan to be on campus (parking is free after 5pm).

Option 3 is definitely the most popular choice for our continuing students as it seems to be more cost effective than purchasing a yearly permit. However, if you plan to spend a significant amount of time on campus outside of class time, it may be worth it to consider purchasing a permit. For more information on parking permits, please visit the Parking & Transportation Services website or contact them at (520) 626-PARK (7275).

Student Organizations

Public Health Student Alliance (PHSA) – Tucson

The Public Health Student Alliance (PHSA) is the primary student organization of the college. All MEZCOPH students are members of PHSA. Established in 1997 by a group of committed MPH students, the initial charge of the group was to advocate for public health issues and to promote networking of students who work or wish to work in the field of public health. Since that time, the organization has matured and has expanded its scope of interest and activities to include participation in civic health promotion events, social events, intramural sports and service projects. In addition to fundraisers, students have organized technical assistance workshops, advocacy trainings, and a student-to-student mentorship program. Although officers are elected each year, the group has chosen to govern itself in a nonhierarchical fashion, giving each officer a programmatic area to oversee and sharing the task of meeting management.

Public Health Student Alliance (PHSA- PHX)

The Public Health Student Alliance of Phoenix (PHSA-PHX) is one of the student organizations designed to involve the Phoenix-based University of Arizona students in the surrounding community. The organization was founded in 2011 in order to keep all students involved in the public health field who otherwise would not be able to partake in Tucson-based activities. All students in Phoenix-based MPH programs are members, and other MPH students have the option of joining as well. The primary mission of the group is to promote student services and outreach in Maricopa County and on the Phoenix Biomedical Campus.

American Indian & Indigenous Health Alliance (AIHA)

The American Indian & Indigenous Health Alliance (AIHA) is an undergraduate and graduate student organization based at the University of Arizona Mel & Enid Zuckerman College of Public Health. The club was established in 2012 by a group of MPH and DrPH students to enrich and foster the educational and professional experience of Indigenous students at the University by offering diverse avenues of support that are responsive, adaptive, and efficient to meet the needs of Indigenous students, and by so doing increase the representation of Indigenous students in public health disciplines.

American Industrial Hygiene Association (AIHA)

The American Industrial Hygiene Association (AIHA) at the University of Arizona is the local student section of the nationally recognized AIHA. As a member of the University of Arizona community, this club strives to promote interest in the profession of Industrial Hygiene, as well as create professional development opportunities for student members. The club provides networking opportunities for members of the Industrial Hygiene community through seminars, training opportunities, local tours, and roundtable discussions developed by the student group. Each year, AIHA at UA makes a strong effort to raise money and send as many members as possible to the American Industrial Hygiene Conference and Exposition held in early summer at the end of the school year.

The club has a strong focus in forging solid relationships with local and national employers with an interest in developing internships, building careers, and securing donations of equipment and money for the club. In addition to professional development, the UA AIHA chapter collaborates with UA Risk Management as a service to the university and participates in student recruitment for the Environmental Health Sciences programs.

MEZCOPH Student Ambassadors

To aid the University of Arizona Mel and Enid Zuckerman College of Public Health with outreach and recruitment, the Office of Student Services and Alumni Affairs coordinates an undergraduate and graduate Ambassador program. With a competitive application process, ambassadors proudly represent the College's student perspective to prospective students and their families, the University of Arizona and Tucson communities, and other groups as called upon. College Ambassadors assist with pipeline, undergraduate, graduate, and minority recruitment, with activities including the following:

- Communication with prospective and admitted students
- Volunteer for AHCS-sponsored middle school and high school events
- Outreach to campus clubs and organizations
- Staff tabling events on the UA Mall, as well as at the American Public Health Association, Arizona Public Health Association, and Graduate School Fairs
- Student panels for visit days
- Lots of other fun outreach/recruitment activities

Environmental and Occupational Health Student Association (EOHSA)

The Environmental and Occupational Health Student Association brings together students who have mutual interests in environmental health; engages member students in discovery through environmental health research and scholarship; encourages leadership in solving complex environmental health problems; and actively promotes the improved health and welfare of the campus, community, and nation through participation and education in environmental health concepts.

Student Aid for Field Epidemiology Response (SAFER)

Developed as part of an MPH internship in Fall 2004 and Spring 2005, the Student Aid for Field Epidemiology Response (SAFER) team has become a well-established organization/course within the College. The organization's goal is to provide training and infrastructure for graduate students to work with state and county public health practitioners on short-term outbreak investigations or short-term, high need problems. Training is provided through a class that covers the basics of outbreak investigations and brings in speakers who share their real world experiences with the students. Students also attend training sessions at the state and two major county health departments. Students have assisted various agencies on multiple outbreaks since the team's creation. The SAFER experience is now offered as a 2 unit credit course, EPID 596D.

Student Managed Events

MPH Internship Conference

With minimal faculty and administrator guidance, MPH program student volunteers are responsible for planning and facilitating the college's MPH Internship Conference, held in the spring and fall semesters. This conference, to which public health professionals, university administrators, undergraduate students and the public are invited, showcases the outstanding accomplishments of MPH students in their internships and functions as an outreach event, as well as serves as a student recruitment strategy. The format of the Internship Conference is similar to that of a scientific meeting, with multiple sessions occurring at the same time. A good deal of event coordination and collaboration skills on the part of the student planning committee ensures that all details are effectively managed. Student committee members assist with coordination of presentation rehearsals, format the conference booklet and coordination of volunteers for the day of the event.. The MPH Coordinator and Director of Phoenix Programs oversee the committee.

Public Health Poster Forum

The MS, PhD, and DrPH programs of MEZCOPH host an annual poster forum initiated and led by students. Students throughout the university are invited to present their original public health related research or community engagement projects. The event also provides an opportunity for student participants to network with public health professionals from industry and regional and state governments. The goal is to promote future collaborations such as employment and research partnerships as well as to gain experience and expertise planning and participating in a professional conference. The student planning group invites keynote speakers, develops promotional literature,

maintains a website that provides guidance for poster creation and participant registration, coordinates judging, and produces a forum program which includes abstracts. Posters are judged by faculty and community partners, and scholarships are awarded to the best student posters.

Social Justice Symposium

Students of the Mel and Enid Zuckerman College of Public Health plan and host an Annual Social Justice Symposium in the spring semester. The Social Justice Symposium is designed to engage students, faculty, health professionals, and community members in dialogue to cultivate awareness and encourage action in the pursuit of equal justice for all people in every aspect of our society. The event is entirely student-driven with support from the Zuckerman College of Public Health and numerous other sponsors.

Student Resources at Drachman Hall

Lockers

Students may reserve a locker for use while a student at MEZCOPH. Requests for lockers are processed by the administrative assistant in the Office of Student Services and Alumni Affairs, Room A302 of Drachman Hall. A one-time, non-refundable user fee of \$5 is assessed. To reserve a locker, a student should identify the range of locker numbers in the first floor hallway in which the locker is desired and communicate this information to the administrative assistant, who will assign the locker number and provide the padlock combination to the student. Students may not use their own padlocks on Drachman Hall lockers. Drachman Hall is not accessible in the evening or on the weekend, so needed items stored in lockers should be retrieved prior to the conclusion of classes.

Student Lounge

The MEZCOPH Student Lounge is located on the first floor of Drachman Hall in Room A102. Equipped with comfortable furniture, several study tables, a microwave oven, a computer and printer, MEZCOPH students are encouraged to use the Student Lounge on a regular and frequent basis to study or meet with peers. The room may not be reserved. Access to the Student Lounge is via CatCard. Students desiring to use the Student Lounge must complete a Drachman Hall Access Application, which outlines the guidelines for use. This form is found on the student Hub under Student Forms. The completed form must be turned in to the administrative assistant in the Office of Student Services. It is then submitted to the Business Office for access approval.

Wellness Room

A Wellness/Activity Room is located in Drachman Hall A110. The room provides a safe and attractive space for faculty, appointed professionals, staff, and students to participate in a variety of physical activities for the enhancement and promotion of individual wellness. The room is equipped with exercise mats, small exercise equipment, a refrigerator, and sink. Those wishing to access the facility are required to sign a waiver (medical release form) and complete a Drachman Hall Access Application. These forms are found on the student Hub.

Computer Lab

The MEZCOPH Computer Lab, equipped with 20 personal computers and a printer, is located on the third floor of Drachman Hall in Room A319. The Computer Lab is available for general use on Monday through Friday from 8 am to 5 pm, unless the lab has been scheduled for a class or other College activity.

Check out the computer lab schedule by dropping by the computer lab or looking under Drachman Hall, Room A319 for the day you're interested in at the [Room Scheduler](#). More information in the [Computer Lab](#) section.

Lactation Room

The College of Public Health's lactation room is located in Drachman Hall A107, just around the corner from A112. How to use the lactation room:

1. See Gisela Ochoa in the Office of Student Services, A302, or e-mail her at ochoag@email.arizona.edu, to get the access code
2. Enter the code on the keypad outside of room A107.
3. Be sure to lock the door using the manual lock so that other people can't enter the room while it is in use.
4. Fill out an evaluation form to help us keep track of how often the room is used!

Student Resources at the U of A

In addition to the resources available at Drachman Hall, the University of Arizona has a variety of resources just for you! These resources include:

- [African American Student Affairs](#)
- [Asian Pacific American Student Affairs](#)
- [Campus Health Services](#)
- [Campus Pantry](#)
- [Campus Recreation Center](#)
- [Career Services](#)
- [Chicano/Hispanic Student Affairs](#)
- [Counseling and Psychological Services](#)
- [Dean of Students](#)
- [Diversity & Inclusion](#)
- [Disability Resource Center](#)
- [Financial Assistance](#)
- [Graduate College](#)
- [Graduate and Professional Student Council \(GPSC\)](#)
- [International Student Programs and Services](#)
- [The Think Tank \(tutoring and other services\)](#)
- [LGBTQ Student Affairs](#)
- [Native American Student Affairs](#)
- [Oasis Sexual Assault, Relationship Violence and Trauma Services](#)
- [Office of Institutional Equity](#)

- [Ombudsperson Committee](#)
 - [Safe Ride](#)
 - [Strategic Alternative Learning Techniques \(Learning Disabilities\)](#)
 - [Student Housing](#)
 - [UA Bursar's Office](#)
 - [UA Events – Getting Involved](#)
 - [UA Graduate Center](#)
 - [UA Human Resources](#)
 - [UA Title IX Office](#)
 - [Veterans Services](#)
 - [Women and Gender Resource Center](#)
-

Talk with a Student

Are you interested in connecting with a current student to learn more about graduate student life at MEZCOPH? Please feel free to contact one of our graduate student Ambassadors. Their e-mail addresses on their [profiles](#), and they are always happy to chat via email, phone, or over coffee.

You can also connect with a few current students through our [Facebook](#) group for new graduate students.

Tucson & Phoenix

Living in Tucson

When a city springs out of the desert where everyone wears shorts and flip-flops, you may wonder what people in Tucson do. Saguaro tipping? Rattlesnake hunting? There are many great things to do in Tucson!

From Kitt Peak National Observatory to the Sonoran Desert Museum, the [Visit Tucson](#) website lists some great information on relocating to Tucson, attractions in the city, hiking locations, and restaurant recommendations.

Tucson has also been recognized internationally for its [delicious food](#) as the first UNESCO City of Gastronomy in the U.S.!

For a great list of the best [art and music venues](#), [restaurants](#) and [shopping](#), check out [The Tucson Weekly's Best of Tucson](#)! This list has everything from the [best guacamole](#) in town (yum!) to the best hike and the best yoga studio to the best musical act.

Living in Phoenix

There are many events and activities to participate in the Phoenix area. This list is a great starting point to learn more about some of the amazing things going on in the valley: <https://www.visitphoenix.com/>

Some of our current students listed their favorites, including:

- Visiting the museums (The Heard and the Art Museum)
- Barrett-Jackson Collector Car Auction
- Waste Management Golf Open
- Fiesta Bowl
- The Renaissance Festival
- The Arizona State Fair
- The Phoenix Zoo and Zoolights
- Desert Botanical Gardens
- Spring training games
- Music festivals
- Sporting events
- The farmers' markets
- All of the great hiking (Squaw Peak, Camelback, North Mountain, South Mountain, McDowell Mountain, Papago Park)
- First Fridays downtown
- Local breweries
- The Urban Wine Walk
- When it gets warmer, tubing down the Salt River

Housing

Housing in Tucson

From southwestern style adobe guest houses to apartment complexes to fancy townhouses, Tucson has a lot of great, affordable housing (see the infographic below)!

Since many of you will be moving to Tucson for graduate school (and some of you are moving around in Tucson), below is a list of resources for housing, as well as average costs.

[La Aldea \(on campus graduate student housing\)](#)

[UA Off Campus](#)

[Craigslist](#)

<https://www.rent.com/>

<https://www.apartments.com/tucson-az/>

[Tucson Homes for Sale](#)

[Tucson Properties and Homes for Sale](#)

Padmapper.com

Hotpads.com

[Zillow](#)

Average Cost of Housing in Tucson

Unfurnished Apartments - Average Rent per month excluding utilities (HUD Fair Market Prices, 2020)

Efficiency: \$618 | 1-bedroom: \$721 | 2-bedroom: \$949 | 3-bedroom: \$1,369 | 4-bedroom: \$1,618

Houses Unfurnished Average Rent (includes townhomes & guest houses)

1-bedroom: \$441 | 2-bedroom: \$1100 | 3-bedroom: \$1,500 | 4-bedroom: \$2,000

Housing in Phoenix

The MPH in Public Health Practice, Health Services Administration – Phoenix, and the Phoenix MD/MPH are offered at the Phoenix Biomedical Campus, located in downtown Phoenix (approximately 115 miles north of the University of Arizona's Tucson campus).

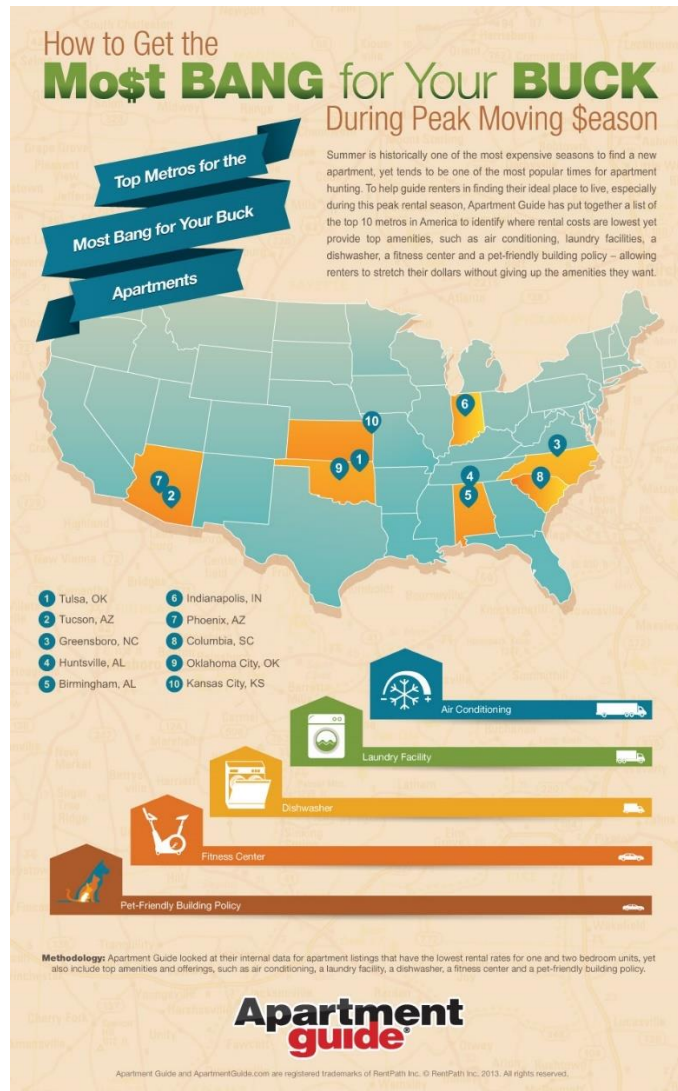
Downtown Phoenix is the heart of the valley, and has many exciting things to offer its residents. The Downtown Phoenix Partnership has a website for all things downtown:

<http://www.downtownphoenix.com>. This is a great resource for those considering living in downtown Phoenix. It's also a fantastic website for those who plan to enjoy all that is offered downtown, while living in one of the neighboring metro Phoenix communities.

A great resource for those looking to relocate is: <https://phoenixrelocationguide.com/>. This website has information about relocating downtown or to one of the many metro Phoenix communities.

The proximity of the Phoenix Biomedical Campus to the [METRO Light Rail](#) and [Bus Lines](#) makes commuting to the downtown campus simple and cheap! The bus system and light rail connect downtown Phoenix to the many neighboring communities. From Tempe to Mesa to Glendale and beyond, you can live almost anywhere in the valley and be a bus ride or two away from the Phoenix Biomedical Campus. There are also parking options for those who plan to drive to campus.

A current Phoenix MPH student recommends new students use [Apartments.com](#) as a resource to review housing options. She also advises new students to visit before you make your housing decision. Drive around the community you think best fits your personality and needs, check out what's available, look at the proximity to the Light Rail (or other commuting options), and then decide!



Tucson Festivals

Tucson has many festivals! Here's a list of our favorites.

Fall

Oktoberfest in Ski Valley > Weekends in September & October
Head up Mt. Lemmon for beer, brats and polka!

Tucson Meet Yourself > October

Lovingly known as "Tucson Eat Yourself" this festival showcases authentic food, arts, song and dance of the Old Pueblo. <http://www.tucsonmeetyourself.org/>

All Souls Procession > November

Over 20,000 participants on the streets of downtown Tucson participate in this two-mile long human-powered procession that ends in the finalizing action of burning a large urn filled with the hopes, offerings and wishes of the public for those who have passed. <http://www.allsoulsprocession.org/>

El Tour de Tucson > November

Over 9,000 cyclists participate in this scenic and sometimes treacherous ride through Tucson. Participants may choose to cycle 109, 80, 67 or 35 miles. Cheaper rates & lots of fun for volunteers. <http://www.perimeterbicycling.com/el-tour-de-tucson/>

4th Avenue Street Fair > December

This street fair happens twice a year! Tucson shuts down 4th Ave. from Ninth Street to University Blvd to make room for art, food and other vendors. <http://www.fourthavenue.org/>

Winterhaven Festival of Lights > December

For 60 years, the residents of a neighborhood called Winterhaven have hosted the Festival as their gift to the community and used the event's popularity to host a fundraiser for the Community Food Bank. <http://www.winterhavenfestival.org/index.html>

Spring

Tucson Gem and Mineral Show > February

The largest, oldest and most prestigious gem and mineral show in the world. Thousands of exhibitors from around the world take over Tucson for 2 weeks every year showing off the most prized gems from their countries. <http://www.tgms.org/show/>

Tucson Festival of Books > March

This is now the 4th largest book festival in the country with 80-100,000 people, authors, and community members. Something for everyone! <http://tucsonfestivalofbooks.org/>

4th Avenue Street Fair > April

This street fair happens twice a year! Tucson shuts down 4th Ave. from Ninth Street to University Blvd to make room for art, food and other vendors. <http://www.fourthavenue.org/>

Year-Round

Southern Arizona Roadrunners

SAR hosts race events throughout the year, and is your link to informal running groups. <http://www.azroadrunners.org/>

Meet Me at Maynard's > (Every Monday)

Meet on Mondays nights in downtown Tucson to run or walk, enjoy downtown, and meet active adults and families. <http://www.meetmeatmaynards.com/>

Tuition

Below are the tuition and fees **per semester** for the Fall 2020. Fall 2021 tuition rates will be posted by the university in June of 2021.

[Graduate Programs \(MPH, MS, PhD, DrPH\)](#)

For more information, please visit the following links:

- [Bursar's Office](#)
- [Office of Scholarships & Financial Aid](#)
- [Student Health Insurance Premiums](#)
- [Estimated Costs of Attendance](#)

Questions?

Please contact a member of our Office of Student Services and Alumni Affairs or connect with us via the Facebook group if you have any questions or if we can help in any way!

Eva Batista-Wietecha, Director of Admissions | coph-admit@email.arizona.edu | 520.626.3201

Kim Barnes, Director of Phoenix Student Affairs Office | kjf@arizona.edu | 602.827.2070

Tanya Nemec, MPH Coordinator | tjnemec7@email.arizona.edu | 520.626.3204

Michael Tearne, MS/Doctoral Coordinator | mtearne@email.arizona.edu | 520.626.2112

Chris Tisch, Assistant Dean for Student and Alumni Affairs | cbt@email.arizona.edu | 520.626.9112

We look forward to seeing you in August!